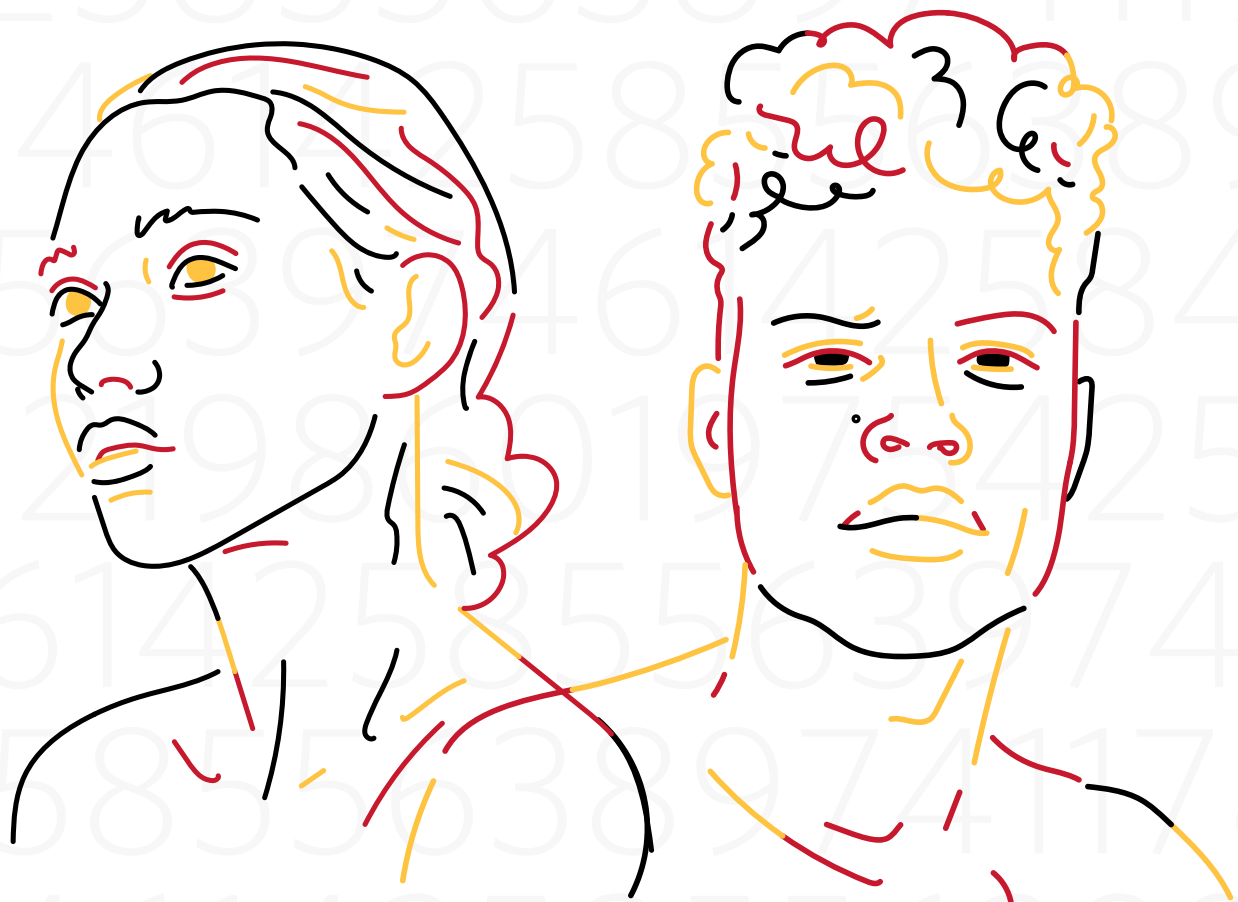




POPULATION DATA PROJECT

# NATIONAL POPULATION ESTIMATE 2021



# From the National Statistician

The National Statistical Office (NSO) is the lead agency responsible for the collection, compilation, analysis and dissemination of official statistics. Population data is the fundamental denominator of planning and decision making for governments of all levels, institutions, development partners and other entities which strive to contribute to the development goals of our country.

NSO in partnership with UNFPA has released the Population Estimates 2021 for PNG, that was generated through the use of satellite images and household surveys to respond to the demand for up-to-date data.

The Population Estimates 2021 for PNG provides information on the population disaggregated by age and sex. In addition to the national level, estimates were generated at the regional, provincial, district and LLG levels.

The generation of the Population Estimates using this technology is the first of its kind in the Pacific region enhancing capacity at NSO to acquire proficiency in this 21st century.

Progressing the generation of the Population Estimates 2021 would not have been successful without the financial support from the Australian Government and AusPNG Partnership. Furthermore, the continued support from the United Nations Population Fund (UNFPA) in providing the technical leadership in engaging WorldPop, an applied research group at the University of Southampton (UK), and in placing the PNG NSO amongst other NSOs around the globe which are advancing into the use of modern technological methods to produce data and statistics important for nation building is appreciated.

Gratitude is also extended to the WorldPop for their expertise in carrying out the estimation of PNG's population and to the Rotarians Against Malaria for sharing their provincial population data which was used as one of the inputs in the generation of population estimates.

I am also indebted to the NSO Project Management Team for their tireless efforts in managing the technical and administrative aspects of this exercise for the successful generation of population estimates for PNG.

Mr. John Igitoi  
National Statistician

## About the Estimate

The Population Estimate 2021 provides the total population count at the National, Provincial, District and LLG levels and also by age and sex. The estimate can support decision making and planning in combination with other datasets, it can be used to quantify the education needs of an area and inform us of the stresses on the existing services and infrastructure.

### How is this estimate calculated?

The estimation uses a series of different datasets to calculate the population of a geographic or administrative area. It starts by looking at areas where there have been recent, reliable population data collection exercises. In Papua New Guinea, this includes the Urban Structural Listing and Household Survey for the Long Lasting Insecticidal Net Distribution by Rotarians Against Malaria.

The strength of relationship between the population data and the socio-economic, environmental and geographical characteristics, influences which methods are used in population estimation. Some of these characteristics, such as night-time lights, distance to health providers and other facilities, and slope are measured using aerial images that are collected from satellites. The relationship between population size and geographic characteristics can then be used to estimate the population of the areas for which we do not have recent observations.



This method has been applied in areas where the collection of data is not possible to undertake or to complete, in countries such as Afghanistan, Burkina Faso, Nigeria, Colombia, Democratic Republic of the Congo, and Zambia, through the technical support of the WorldPop. This is the first time this method has been used in the Pacific. It is a valuable tool for measuring our region's remote populations and Papua New Guinea is at the forefront of this state-of-the-art technological solution for population estimation.

### How accurate is the estimate?

The accuracy of the estimate varies between the national and sub-national level.

The generated estimate does not replace a National Population and Housing Census which remains the most reliable source of information not only on population counts but also the socio-demographic and economic characteristics of the population at the lowest level of geographic subdivision of the country.

# NATIONAL RESULTS

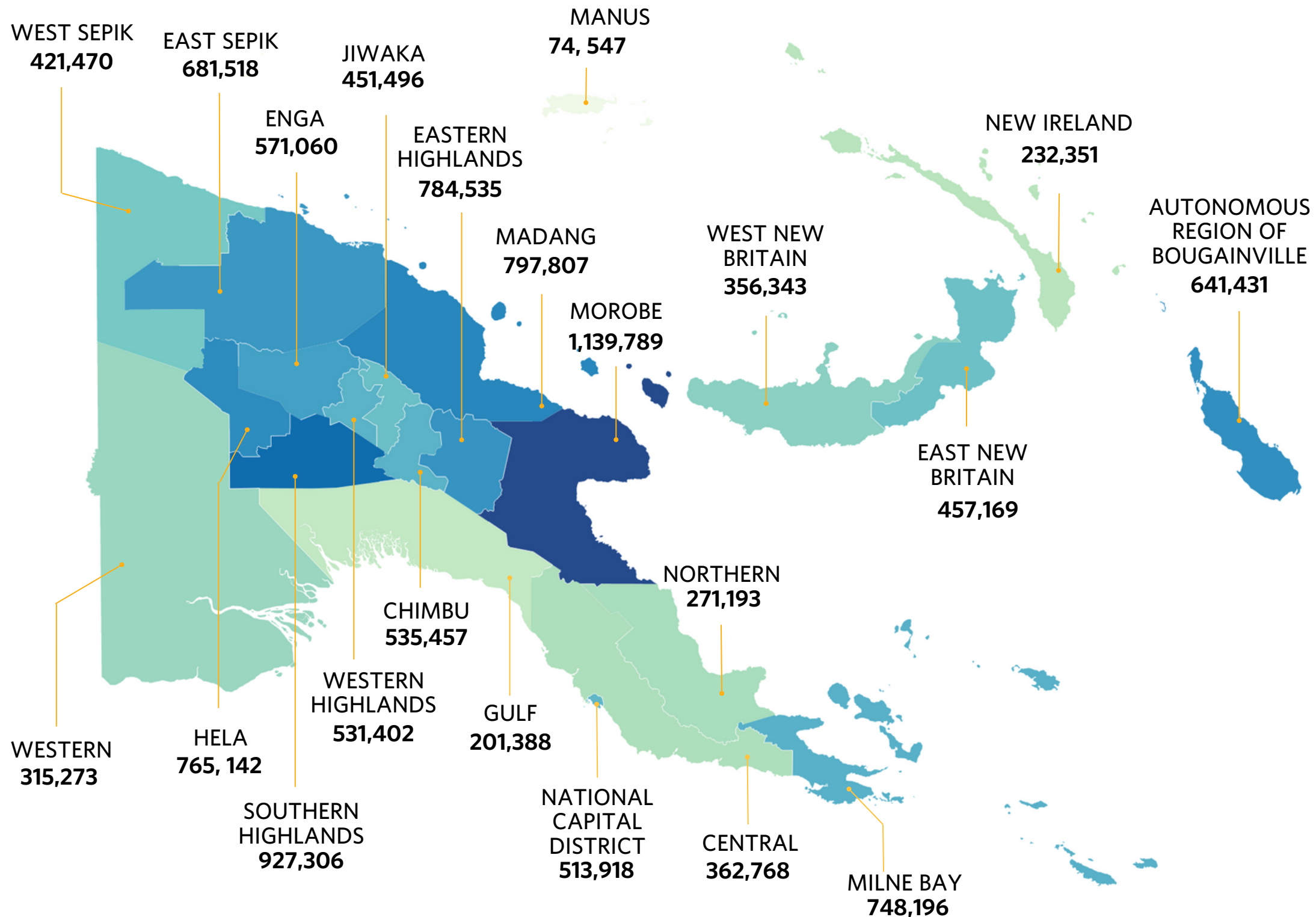
**TOTAL POPULATION**  
**11,781,559**

**HIGHLANDS REGION**  
**4.57m**

**MOMASE REGION**  
**3.04m**

**SOUTHERN REGION**  
**2.41m**

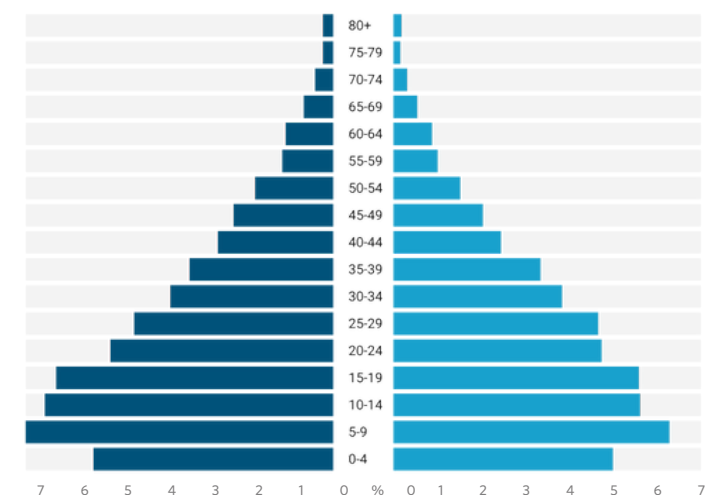
**NEW GUINEA ISLANDS REGION**  
**1.76m**



## POPULATION KEY INDICATORS

Key Indicators	2021 Estimates
Sex ratio ((no. of males/no. of females) X 100)	109
Percentage of working age population (15 – 64 years old)	62
Percentage of older population (65 years old and over)	3
Percentage of youth (15 to 24 years old)	22
Total dependency ratio (0-14 + 65 years old and over) / 15-64 years old	62
Children dependency ratio (0-14/15-64 years old)	58
Old-age dependency ratio (65 years old and over/15-64 years old)	4
Median age, both sexes	21
Median age, Male	21
Median age, Female	22
Percentage of population aged 18 and over	57
Percentage of women who are of reproductive age (15 to 49 years old)	55

## POPULATION BY AGE AND GENDER



# PROVINCIAL RESULTS

<b>Highlands Region</b>	<b>4,566,398</b>
<b>Southern Highlands Province</b>	<b>927,306</b>
Ialibu/Pangia	122,710
Imbonggu	130,285
Kagua/Erave	142,477
Mendi/Munihu	189,230
Nipa/Kutubu	342,604
<b>Eastern Highlands Province</b>	<b>784,535</b>
Daulo	96,018
Goroka	211,974
Henganofi	103,461
Kainantu	107,536
Lufa	59,070
Obura/Wonenara	24,647
Okapa	49,159
Unggai/Benna	132,670
<b>Hela Province</b>	<b>765,142</b>
Komo/Magarima	285,792
Koroba/Kopiago	204,393
Tari/Pori	274,957
<b>Enga Province</b>	<b>571,060</b>
Kandep	92,080
Kompam	72,707
Lagaip/Pogera	191,041
Wabag	150,857
Wapenamanda	64,375
<b>Chimbu Province</b>	<b>535,457</b>
Chuave	62,995
Gumine	61,785
Karimui/Nomane	67,599
Kerowagi	123,045
Kundiawa/Gembogl	136,598
Sina Sina Yongomugl	83,435

<b>Western Highlands Province</b>	<b>531,402</b>
Dei	107,618
Mt Hagen	181,266
Mul/Baiyer	137,765
Tambul/Nebilyer	104,753
<b>Jiwaka Province</b>	<b>451,496</b>
Anglomp/South Waghi	246,878
Jimi	66,514
North Waghi	138,104
<b>Momase Region</b>	<b>3,040,584</b>
<b>Morobe Province</b>	<b>1,139,789</b>
Bulolo	171,006
Finschafen	76,109
Huon	182,438
Kabwum	63,214
Lae	224,983
Markham	109,760
Menyamyia	150,841
Nawae	103,386
Tawae/Siassi	58,052
<b>Madang Province</b>	<b>797,807</b>
Bogia	119,903
Madang	191,292
Middle Ramu	132,168
Rai Coast	115,454
Sumkar	122,905
Usino Bundi	116,085
<b>East Sepik Province</b>	<b>681,518</b>
Ambunti/Drekikier	111,424
Angoram	156,897
Maprik	104,397
Wewak	133,179

Wosera Gawi	97,870
Yangoru Saussia	77,751
<b>West Sepik Province</b>	<b>421,470</b>
Aitape/Lumi	117,612
Nuku	106,744
Telefomin	79,061
Vanimo/Green River	118,053
<b>Southern Region</b>	<b>2,412,736</b>
<b>Milne Bay Province</b>	<b>748,196</b>
Alotau	193,562
Esa'ala	134,905
Kiriwina-Goodenough	101,501
Samarai-Murua	318,228
<b>National Capital District</b>	<b>513,918</b>
Moresby North East	170,588
Moresby North West	212,113
Moresby South	131,217
<b>Central Province</b>	<b>362,768</b>
Abau	57,542
Goilala	56,798
Kairuku-Hiri	175,706
Rigo	72,722
<b>Western Province</b>	<b>315,273</b>
Middle Fly	122,579
North Fly	108,259
South Fly	84,435
<b>Northern Province</b>	<b>271,193</b>
Ijivitari	140,758
Sohe	130,435
<b>Gulf Province</b>	<b>201,388</b>
Kerema	126,950
Kikori	74,438

<b>New Guinea Islands Region</b>	<b>1,761,841</b>
<b>Autonomous Region of Bougainville</b>	<b>641,431</b>
North Bougainville	203,158
Central Bougainville	221,380
South Bougainville	216,893
<b>East New Britain Province</b>	<b>457,169</b>
Gazelle	184,474
Kokopo	117,064
Pomio	91,700
Rabaul	63,931
<b>West New Britain Province</b>	<b>356,343</b>
Kandrian/Gloucestera	95,863
Talasea	260,480
<b>New Ireland Province</b>	<b>232,351</b>
Kavieng	97,521
Namatanai	134,830
<b>Manus Province</b>	<b>74,547</b>
Manus	74,547

The Population Estimate 2021 is funded by the Australian Government with technical support from the United Nations Population Fund (UNFPA)

